

Consiglieri Profile



Consiglieri is a management consultancy firm supporting government, companies and development partners



Global Footsteps
in Two Countries

Projects
Successfully
Completed

100+

8

Years of
exciting
journey

180 Mid-level managers were
trained through 7 capacity
building training

40,000+

Samples were surveyed
using ODK platform

4,000+

Samples were surveyed using
phone call interview

70,000+

People were reached through
different projects

House# 360 (First Floor), Lane-05,
Baridhara DOHS, Dhaka, Bangladesh

+88 02 8418708

info@consiglieri.com.bd

www.consiglieri.com.bd



In-house Team

20

Full-time employees

5

Female employees

15

Male employees

80%

Employee have Master's Degree

100+
Consultants

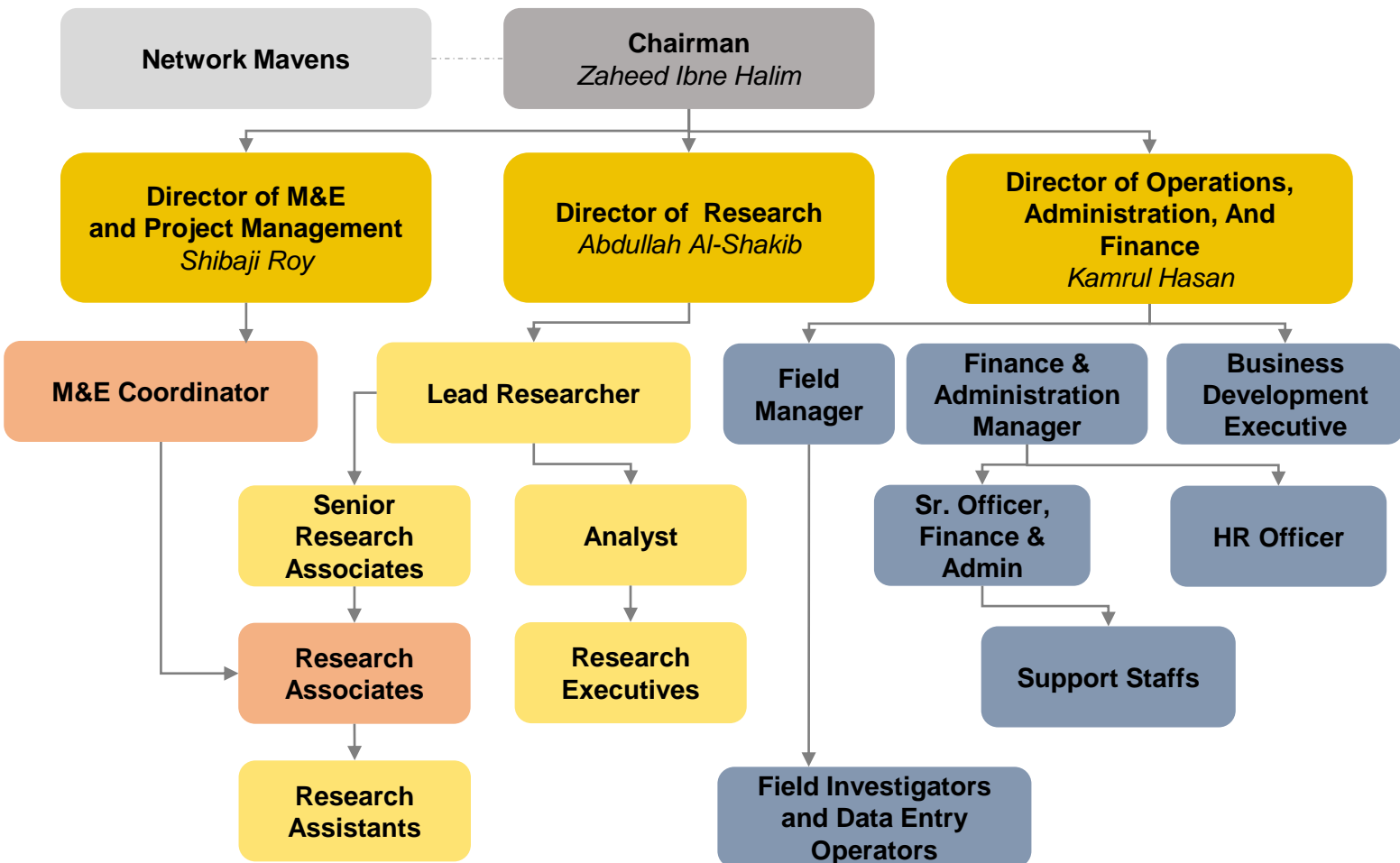
- Agriculture and Livelihood
- Gender & Child Protection
- Communication & Media
- Capacity Development
- Economics
- Statistics and Data Analysis
- Environment & Disaster Risk Management
- Health and Nutrition
- Market System Development
- MEAL
- Business development
- RMG
- Finance

250+

Enumerator Pool



Organogram



Featured

SERVICES of CONSIGLIERI



Research and Technical Assistance

- ✓ Agricultural Value Chain Analysis and Development
- ✓ Research Partnership
- ✓ Action Research
- ✓ Multi-Sectoral Impact Assessment of Climate Change
- ✓ Policy and Governance Research
- ✓ Disaster Risk Reduction (DRR) Analysis
- ✓ Climate Vulnerability and Capacity Analysis (CVCA)
- ✓ Faecal Sludge Management
- ✓ Market Research for Developing Business Model
- ✓ Feasibility Study
- ✓ Situation Analysis
- ✓ Gender study
- ✓ Access to Information
- ✓ Situation Analysis
- ✓ Gender study

- ✓ Monitoring and Result Measurement
- ✓ Project Monitoring and Impact Evaluation Assessment
- ✓ Baseline, Interim and End Line Impact Assessment
- ✓ Database Design, Preparation, Management and Analysis
- ✓ Data Quality Control
- ✓ Baseline, Interim and End Line Impact Assessment



Monitoring & Evaluation



Project Implementation

- ✓ Inclusive Market Development
- ✓ Mainstreaming Women's Economic Empowerment



Capacity Development

- ✓ Shifting Cultural and Social Norms
- ✓ Technical Assistance and Capacity Building

Sectoral Portfolio

- ✓ Agriculture
- ✓ Livelihood
- ✓ Construction
- ✓ Forced Labor
- ✓ Migration
- ✓ RMG
- ✓ Nutrition
- ✓ Fishery
- ✓ FSM service and resource recovery
- ✓ Unpaid Care work
- ✓ Women Cooperatives
- ✓ Healthcare
- ✓ Climate change
- ✓ Entrepreneurship
- ✓ Shifting Social Norms